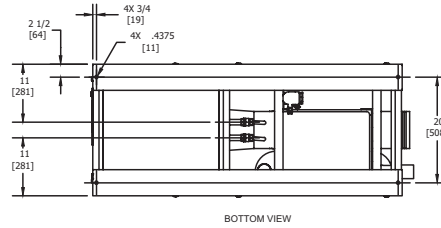
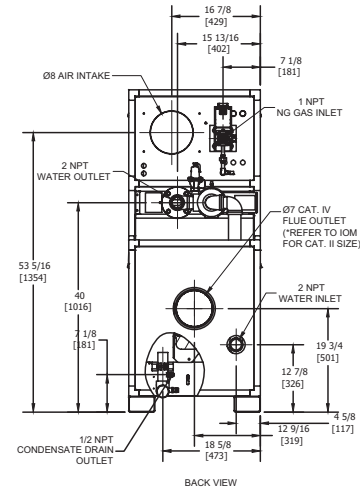
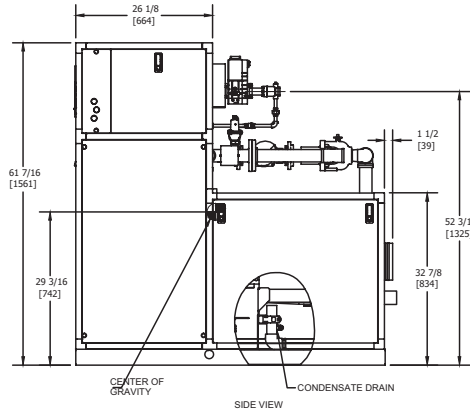
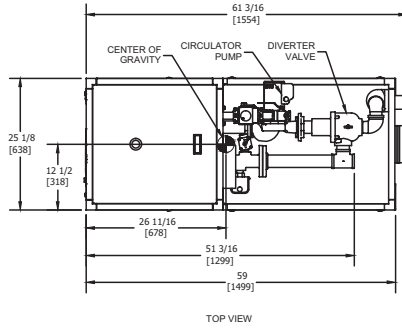


INDOOR UNIT

RSUB-98 REV H

CODE OPTIONS

CSD-1 Manual Reset LWCO



Notes:

1. Dimensions are approximate and should not be used to "rough-in" equipment.
2. Dimensions are subject to change without notice.

BOILER CERTIFIED RATINGS & CAPACITIES

Fuel Type	Natural/Propane Gas	Total FLA	13.0*
Input BTU/hr.	1,000,000 / 293 kW	Min. Gas Pressure Required	2" W.C.**
Output BTU/hr.	952,000 / 279 kW	Max. Gas Pressure Allowed	14" W.C.
Electrical Requirements	(L1, NEU, GND) 120 VAC / 1 ph / 60 hz	Operating Weight	890 lbs. / 404 kg.

BOILER TEMPERATURE RISE / PRESSURE DROP

30°F / 16.7°C			
Flow Rate***		Total Loss****	
GPM	L/s	Ft	kPa
58.0	3.7	9.5	28.4

*** Primary heat exchanger.

**** Includes primary, secondary, mixing valve and piping.

BOILER / WATER HEATER TRIM & CONTROLS

Main Gas Valve	Dungs MBC-SE	Air Switch	Cleveland NS2
Firing Valve	1"	Blower Motor	Fasco 1/2 hp
Ignition Control	Honeywell RM7895C	Relief Valve - CW	3/4" x 3/4" set @ 125 psi
Operating Control	HeatNet®	Relief Valve - CB	3/4" x 3/4" set @ 50 psi
High Limit	Jumo	Flow Switch	TACO
Main Ball Valve	1"	Pilot Regulator	White-Rodgers 25m
Economizer	RBI-1000	Circulator	B&G PL-130 - FLA - 5
Mixing Valve	2"	By-Pass Piping	2"

WATER HEATER HOURLY RECOVERY CAPACITY (GPH & LPH)

40°F	22°C	60°F	33°C	80°F	44°C	100°F	56°C	120°F	67°C	140°F	78°C
2,878	10,879	1,919	7,253	1,439	5,440	1,151	4,352	959	3,626	822	3,108

A.S.M.E.

ASME Sect IV Htg Surface	126.07 Sq. Ft. / 11.71 Sq. M.	Design Data	Max. 125 psig & 250°F
Water Volume	4 gal. / 15.14 Liters		
Water Volume Secondary HX	4.5 gal. / 17.03 Liters		

* Includes pump

** For incoming gas pressures lower than 2" W.C. natural or propane, consult factory.

REP FIRM _____
SUBMITTED BY _____
JOB NAME _____
ARCHITECT _____
ENGINEER _____
CONTRACTOR _____
DATE _____

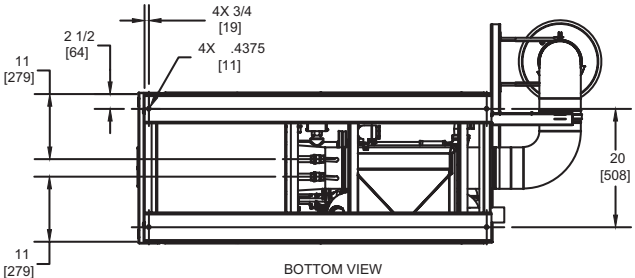
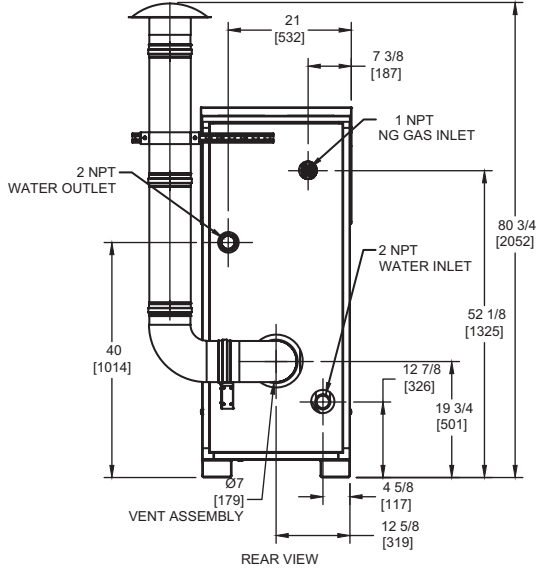
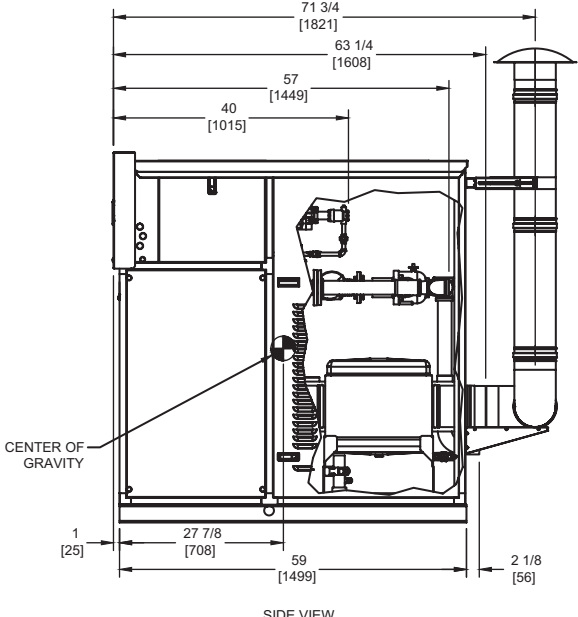
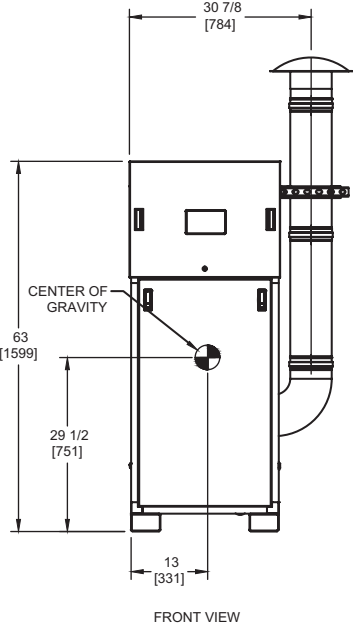
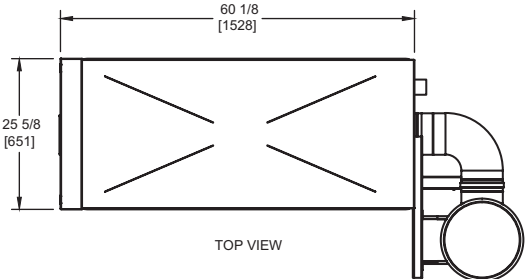
FUTERA FUSION 1000

Category II or IV Appliance
(see Installation and Operation Manual for venting information)



A Division of Mestek, Inc.
Westfield, MA 01085
(413) 568-9571

OUTDOOR UNIT



FUTERA FUSION 1000

- Notes:**
1. Dimensions are approximate and should not be used to "rough-in" equipment.
 2. Dimensions are subject to change without notice.